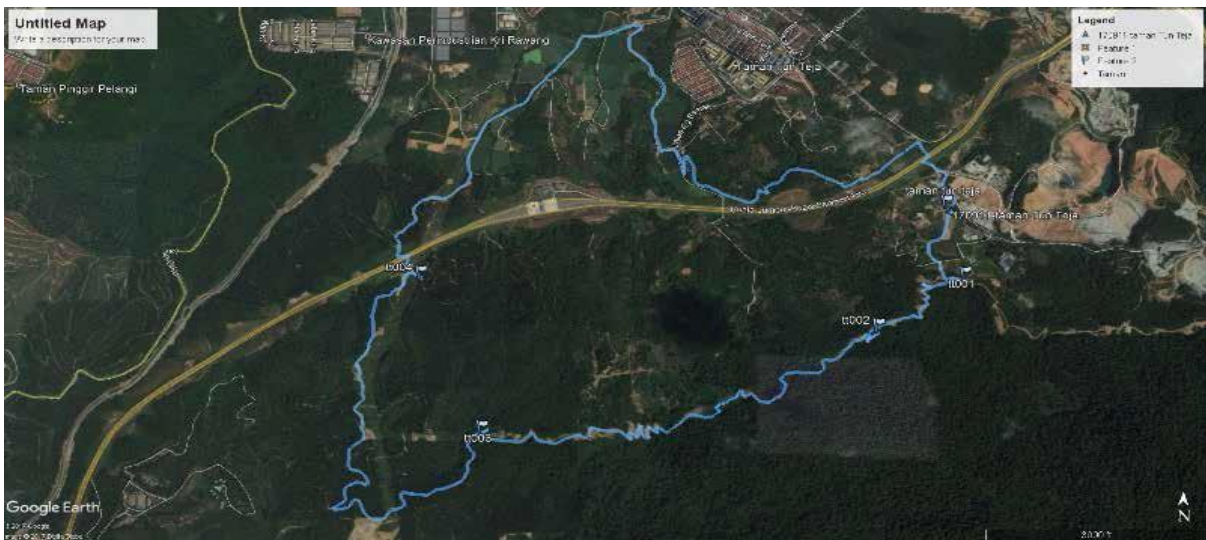


AS IT WAS ON RUN 3852
RAWANG BEHIND TESCO (11/9/2017)
HARE : POWER FOO SWEE SIEN
SCRIBE BY: KEVIN NG KIM HUAT
PHOTOS BY: KANA



13.5km with 630m of climb. Fantastic views, would have been better if no rain. Trails following the powerline construction tracks until reaching the Kuang and Rawang Water Tank trails. 2nd check a bit exciting.

I've never been so close to 275,000 volts could almost touch the wires. Get within 1m of these wires and you are instantly fried to a cinder.

Interesting descent to the third check under the power lines crossing broken trees, thorns, lobangs. Much prefer uphill logging tracks. Don't know how the 6 o'clock came through so fast.

4th check by the tunnel under the highway that we have approached before

from Rawang water tank. Then the trail back on the road tracks,
negotiating the fish farms and the piles of dead chicken feed for the fish.

Overall a good work out, but not an interesting hash run.-

GPS REPORT BY ROB.MANY THANKS
